

Three bedrooms – deluxe

Internal area: 116.2 sqm – 116.7 sqm

Deck: 6.5 sqm

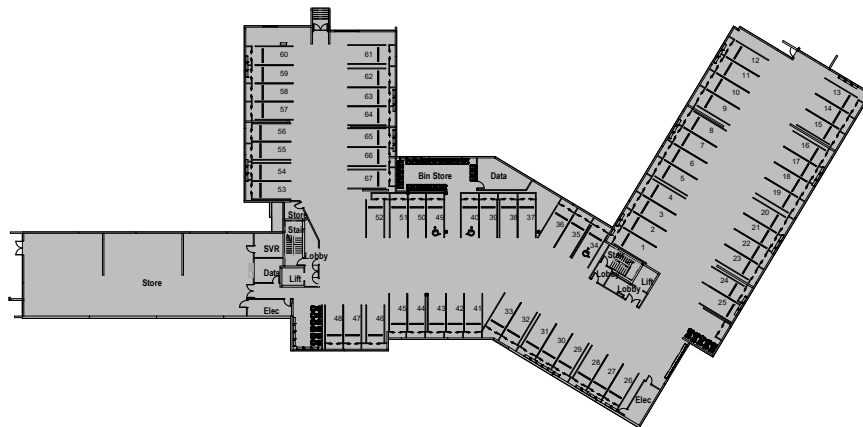
Apartment Features and Appliances

- Drapes and sun filter curtains
- 100% wool carpet
- Feature timber-look plank flooring kitchen and laundry
- Caesarstone waterfall kitchen benchtop with breakfast bar extension
- Premium series 7 and series 9 Fisher & Paykel appliances including:
 - Induction hob
 - Combination microwave and self-cleaning electric wall oven
 - Range hood
 - Integrated single dishdrawer
 - Integrated French door fridge/freezer
 - Laundry tub, washing machine and dryer
- Feature wall option for bedroom
- Non-slip tiled deck
- Emergency call system and 'home and away' alarm
- Pre-wired for UHF, VHF, Sky TV/phone and Internet capability
- Intercom
- Heat pump with remote control
- Water purifier and waste disposal unit
- Two non-slip fully-tiled bathroom with frameless glass shower cubicles, one of which is an ensuite
- 1220x600mm heated towel rail

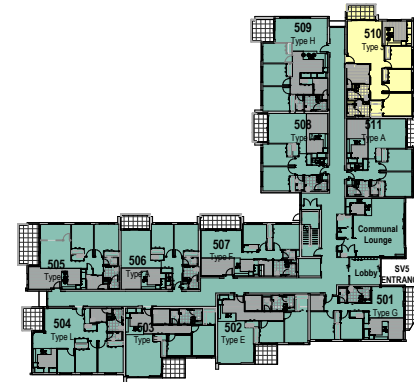


This floor plan is correct as at February 2021. Minor changes may be made to the configuration and fit-out of the building and apartments during construction. Prospective residents should satisfy themselves as to the suitability of the final product before entering an agreement. All Occupation Right Agreements for units at Selwyn Village are secured by a first-ranking encumbrance over Selwyn Village land in favour of the Statutory Supervisor.

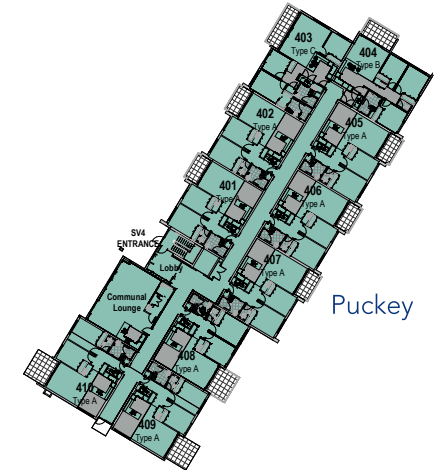
Basement



Ground Floor



Caswell

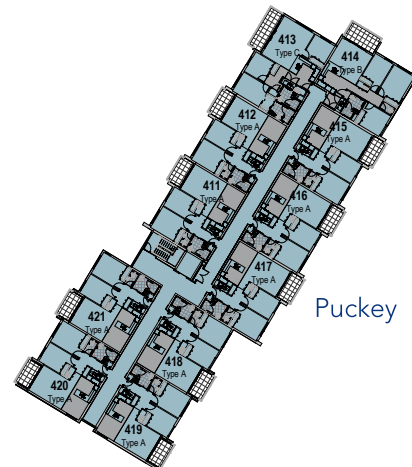


Puckey

First Floor



Caswell

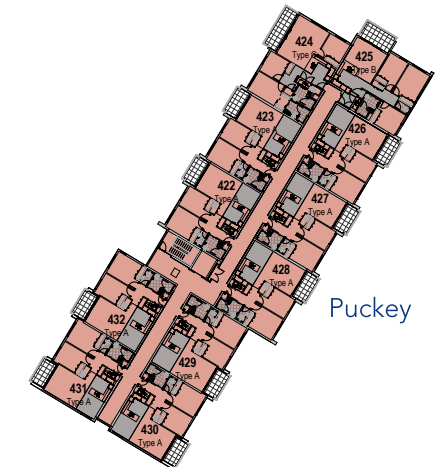


Puckey

Second Floor



Caswell



Puckey



Key: Type J apartments.