

Two Bedrooms

Internal area: 89.9 sqm – 90.2 sqm

Deck: 9.6 sqm – 9.7 sqm

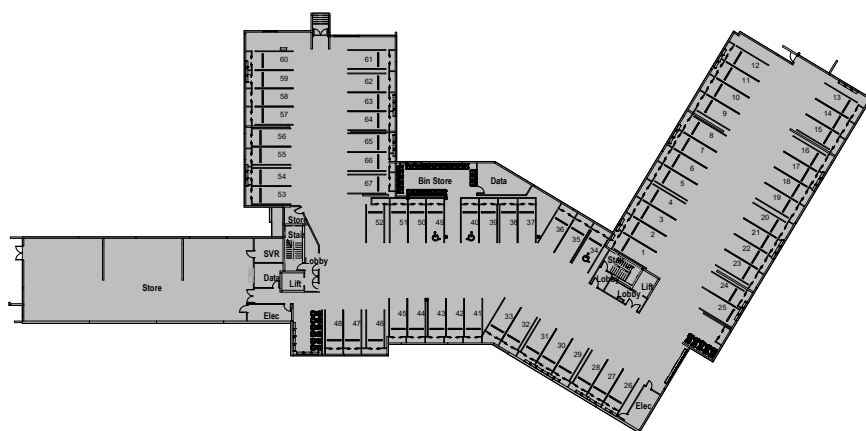
Apartment Features and Appliances

- Drapes and sun filter curtains
- 100% wool carpet
- Feature timber-look plank flooring to Dining, kitchen and laundry
- Caesarstone waterfall kitchen benchtop
- Ceramic hob
- Electric wall oven
- Microwave
- Range hood
- Single dishdrawer
- Fridge
- Laundry tub, washing machine and dryer
- Non-slip tiled deck
- Emergency call system and 'home and away' alarm
- Pre-wired for UHF, VHF, Sky TV/phone and Internet capability
- Intercom
- Heat pump with remote control
- Water purifier and waste disposal unit
- Non-slip tiled bathroom floor with tiled frameless glass shower cubicle and feature wall
- 800x600mm heated towel rail
- Additional separate WC



This floor plan is correct as at February 2021. Minor changes may be made to the configuration and fit-out of the building and apartments during construction. Prospective residents should satisfy themselves as to the suitability of the final product before entering an agreement. All Occupation Right Agreements for units at Selwyn Village are secured by a first-ranking encumbrance over Selwyn Village land in favour of the Statutory Supervisor.

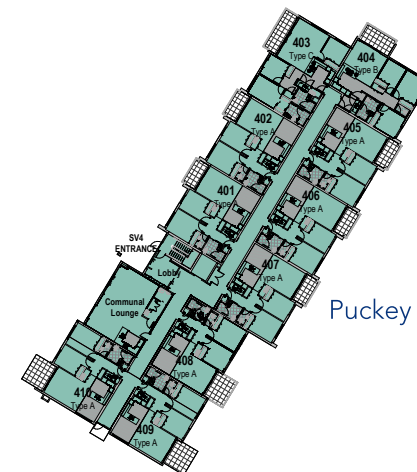
Basement



Ground Floor



Caswell

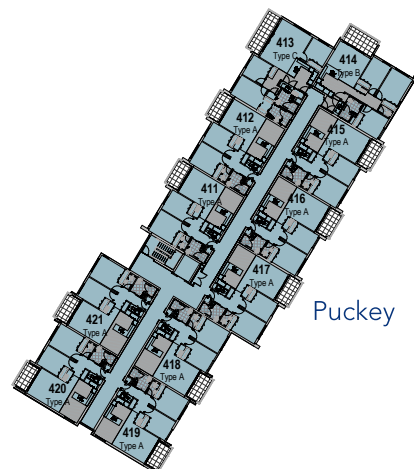


Puckey

First Floor

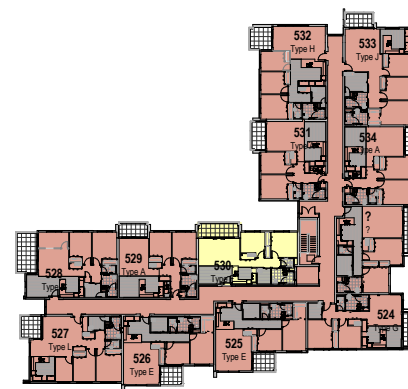


Caswell

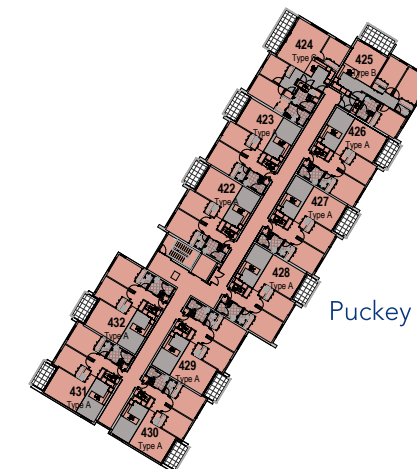


Puckey

Second Floor



Caswell



Puckey



Key: Type F apartments.