

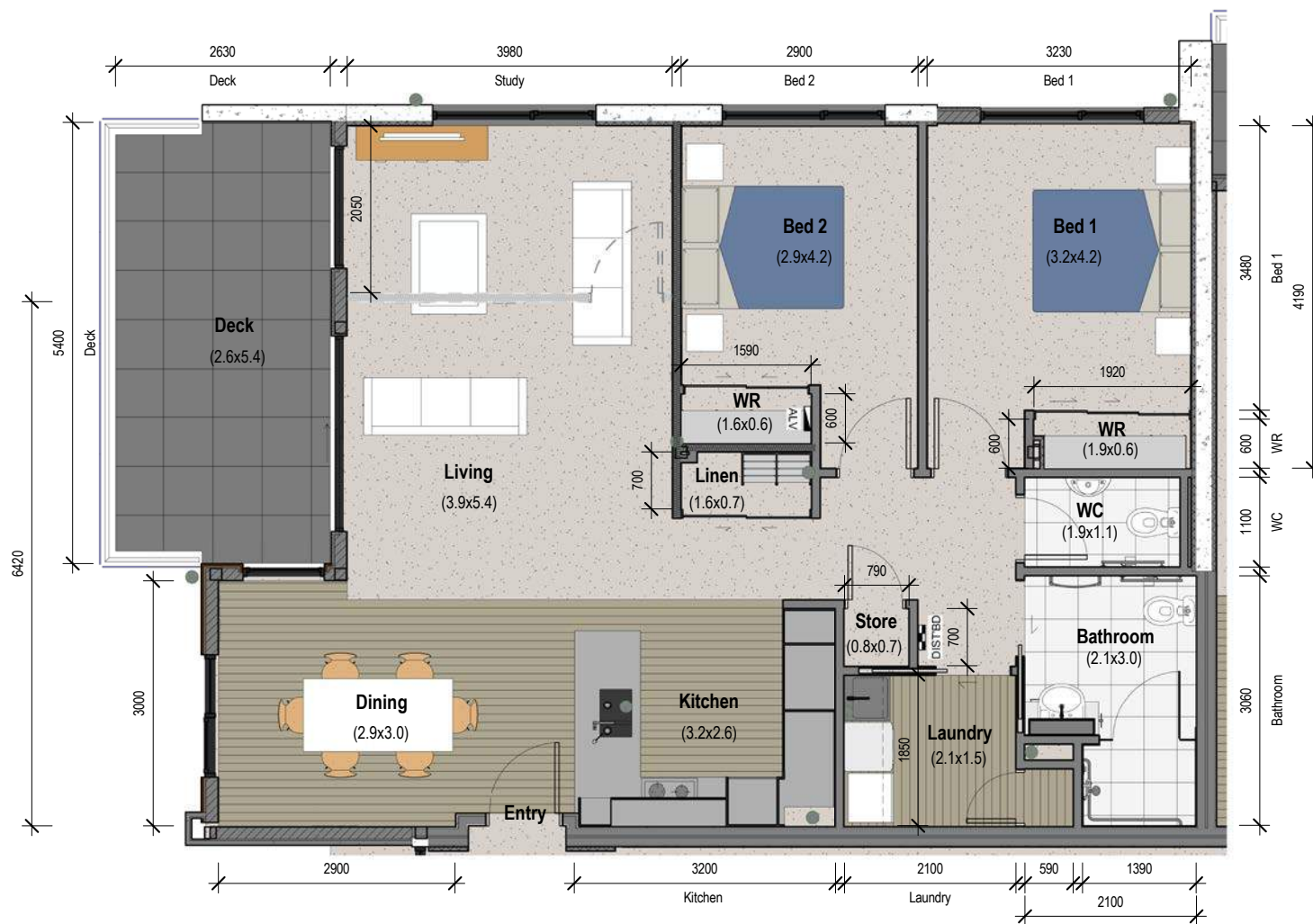
Two bedrooms – deluxe

Internal area: 100.8 sqm – 101.2 sqm

Deck: 13.6 sqm – 13.9 sqm

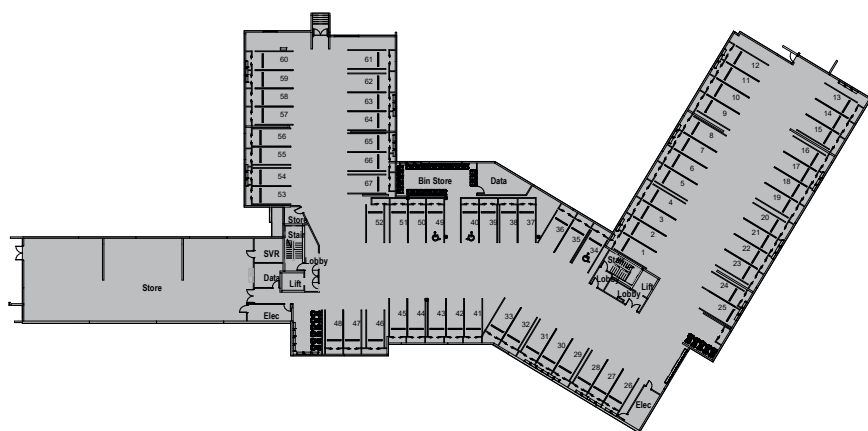
Apartment Features and Appliances

- Drapes and sun filter curtains
- 100% wool carpet
- Option of separate study. Conditions apply
- Feature timber-look plank flooring to entry, kitchen and laundry
- Caesarstone waterfall kitchen benchtop with breakfast bar extension
- Premium series 7 and series 9 Fisher & Paykel appliances including:
 - o Induction hob
 - o Combination microwave and self-cleaning electric wall oven
 - o Range hood
 - o Integrated single dishdrawer
 - o Integrated French door fridge/freezer
 - o Laundry tub, washing machine and dryer
- Feature wall option for bedroom or study
- Non-slip tiled deck
- Emergency call system and 'home and away' alarm
- Pre-wired for UHF, VHF, Sky TV/phone and Internet capability
- Intercom
- Heat pump with remote control
- Water purifier and waste disposal unit
- Non-slip fully-tiled bathroom with frameless glass shower cubicle
- 1220x600mm heated towel rail
- Additional separate WC



This floor plan is correct as at February 2021. Minor changes may be made to the configuration and fit-out of the building and apartments during construction. Prospective residents should satisfy themselves as to the suitability of the final product before entering an agreement. All Occupation Right Agreements for units at Selwyn Village are secured by a first-ranking encumbrance over Selwyn Village land in favour of the Statutory Supervisor.

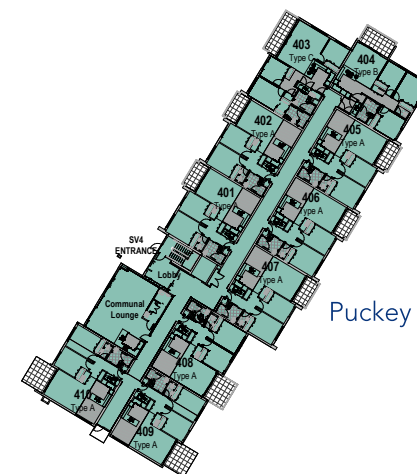
Basement



Ground Floor



Caswell

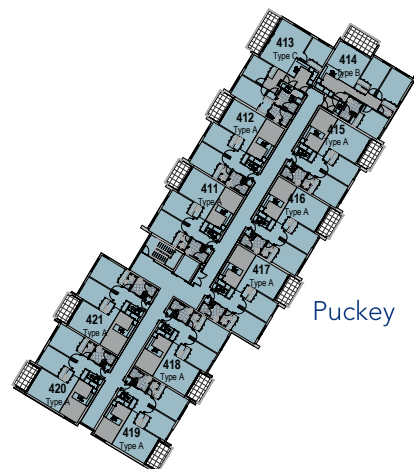


Puckey

First Floor



Caswell

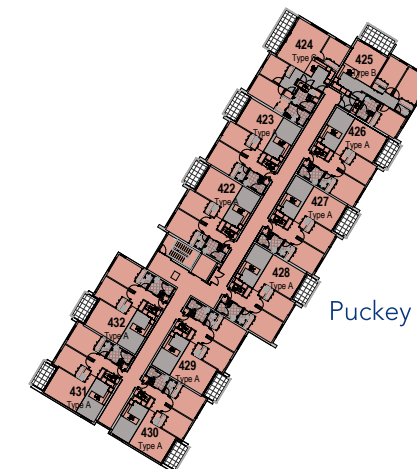


Puckey

Second Floor



Caswell



Puckey



Key: Type D apartments.